

DENMAN



All façade images are artist's impressions only. These images may contain internal or external upgrade items such as feature renders and timber look garage doors. Images contain items not supplied by Burbank, which include furniture, landscaping, fencing and external lighting. See your New Home Consultant for full specifications.

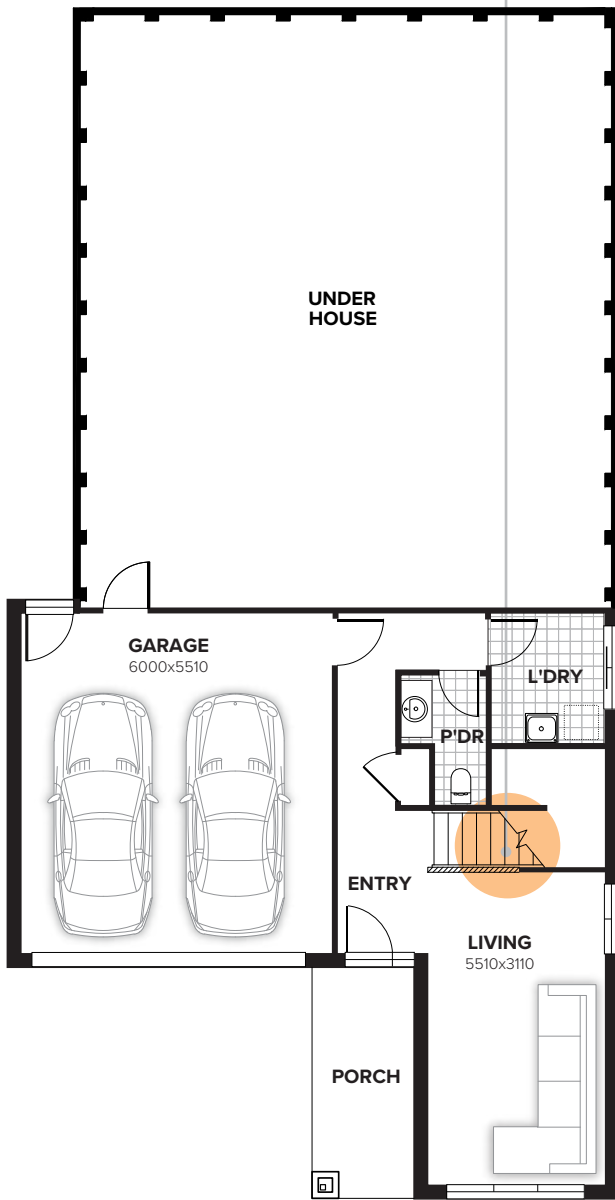
DENMAN 245

4 3 1 2

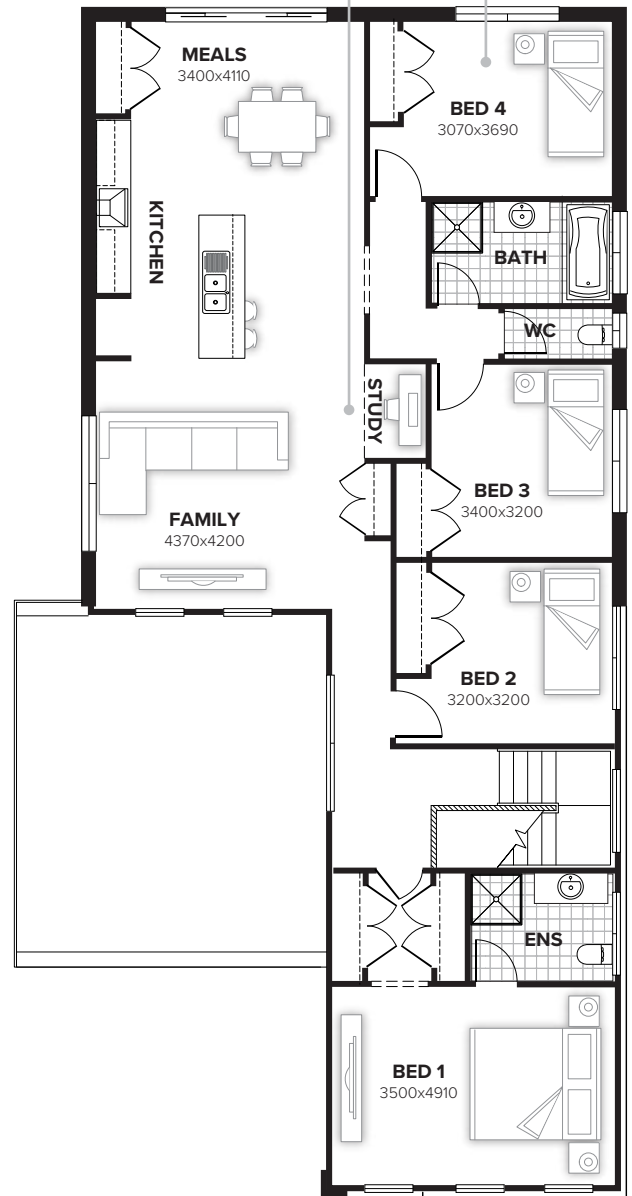
split level design

a quiet study nook

room for everyone



ground floor



first floor

FLOORPLAN OPTIONS

Want to put a personal touch on your home? Speak to your New Home Consultant about the exciting range of ready-to-go design options for this floorplan.

Popular design options include:

- Kitchen option
- Lounge option
- Study option
- Ensuite upgrade
- WIR upgrade
- Powder room upgrade

home width	10.79m
home length	20.99m

residence	200.71sqm	21.60sq
porch	7.34sqm	0.79sq
garage	36.54sqm	3.93sq
total	244.59sqm	26.33sq

Listed details based on Miranda façade floorplan (illustrated)

Call 13 BURBANK Visit burbank.com.au

Burbank 
#noplacelikehome

*Copyright conditions. All photos and illustrations are representative only. Floor plans and specifications may be varied by Burbank without notice, the dimensions are diagrammatic only and a Building Contract with final drawings will display correct dimensions and detail. All designs are the property of Burbank and must not be used, reproduced, copied or varied, wholly or in part without written permission from an authorised Burbank representative. Copyright Burbank Australia (NSW) Pty Ltd. ABN 88 610 822 870. NSW BL 295627C. ACT BL 2016566.

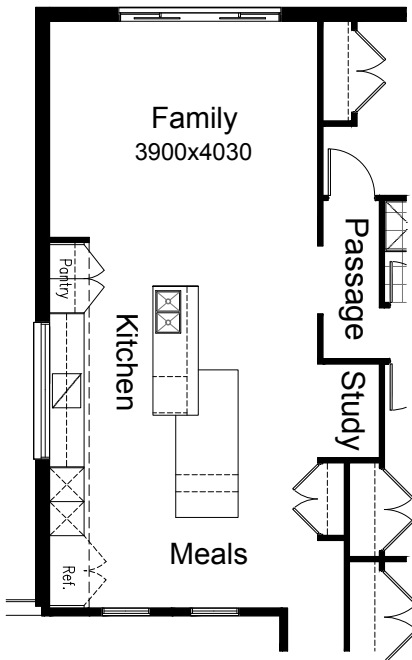
FLOORPLAN OPTIONS

DENMAN 245



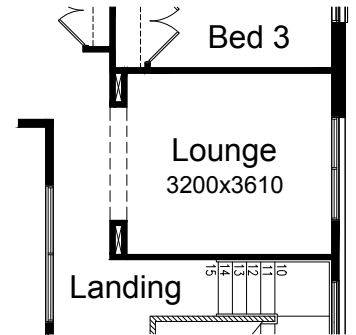
OPTION K1

Provide Kitchen and floor plan option by switching Family and Meals areas. Upgrade Kitchen includes 1100x2600mm built-in Meals bench with wine rack beneath, island bench with dishwasher provision, double wall oven, steam oven & microwave provisions, Refrigerator space, cooktop and retractable rangehood.



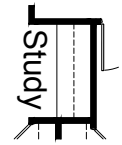
OPTION IP2

Provide floor plan option replacing Bed 2 with Lounge by removing site built plaster lined robe and 1no. 820mm hinged door. Provide matching 600mm wide void to create 2000mm wide opening with bulkhead over.



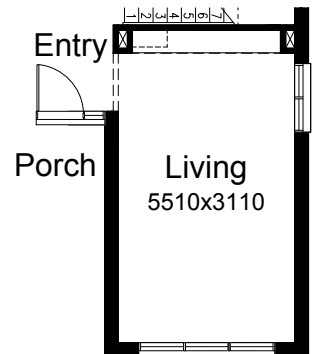
OPTION IP3

Provide Study upgrade option with 60mm built-in laminated bench top, 1no. 600mm overhead cupboard and 2No. 950mm wide open shelves.



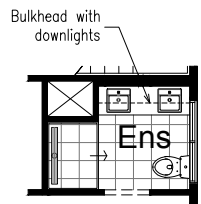
OPTION IP4

Provide Living upgrade option including voids and bulkhead to create entertainment centre. Provide 2No. 60mm thick 600mm wide shelves, 17mm laminated bench top with 2No. 700mm wide drawers and 3No. 600mm base cupboards beneath.



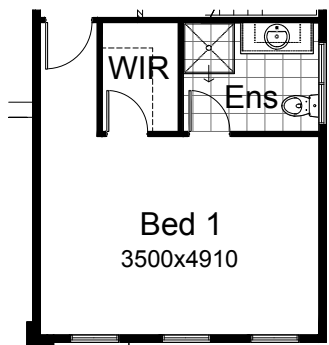
OPTION ENS1

Provide Ensuite upgrade option including 150mm(h)x300mm(w) bulkhead with downlights, 900x1200mm tiled shower base with strip waste, full width built-in vanity with 20mm stone bench top and double basins, feature tile between 2No. mirrors above basins, 90mm dwarf wall shelf above vanity also.



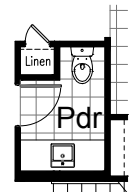
OPTION IP1

Provide Walk-in Robe upgrade option including 1no. 720mm flush panel hinged door, 1no. hanging rail/shelf in lieu of standard robes and decrease Ensuite width by 120mm to suit.



OPTION IP5

Provide Powder upgrade option by relocating the WC pan and providing built-in vanity with wall hung mixer and tap, 40mm stone bench top and 1No. 350mm drawer unit, 1No. 700mm base cupboard and 1no. 350mm base cupboard with feature doors. Relocate Linen cupboard and provide 1no. 420mm flush panel hinged door and decrease width of Linen by 400mm.



Call 13 BURBANK Visit burbank.com.au

Burbank 
#noplacelikehome

*Copyright conditions. All photos and illustrations are representative only. Floor plans and specifications may be varied by Burbank without notice, the dimensions are diagrammatic only and a Building Contract with final drawings will display correct dimensions and detail. All designs are the property of Burbank and must not be used, reproduced, copied or varied, wholly or in part without written permission from an authorised Burbank representative. Copyright Burbank Australia (NSW) Pty Ltd. ABN 88 610 822 870. NSW BL 295627C. ACT BL 2016566.

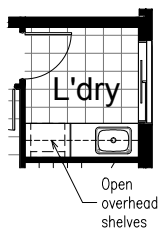
FLOORPLAN OPTIONS

DENMAN 245



OPTION LD1

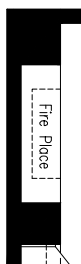
Provide Laundry upgrade option with 20mm stone bench top and built-in stainless steel trough, 1no. 800mm base cupboard, 1no. 350mm base cupboard, overhead open shelves with hanging rails.



OPTION IP6

Provide Built-in fire place with stone apron and 150mm vertical cladding to Family.

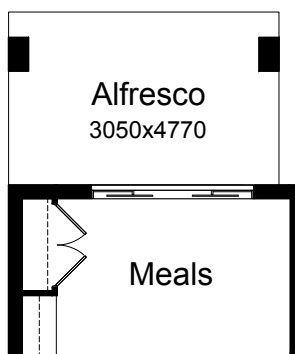
NOTE: Only available with Option K1



OPTION EP1

Provide 3050x4770mm Alfresco option to rear of dwelling including structural concrete slab, 2No. 590x350mm brickwork piers with roof above.

Increases area by 14.55m²



Call 13 BURBANK Visit burbank.com.au

Burbank 
#noplacelikehome

*Copyright conditions. All photos and illustrations are representative only. Floor plans and specifications may be varied by Burbank without notice, the dimensions are diagrammatic only and a Building Contract with final drawings will display correct dimensions and detail. All designs are the property of Burbank and must not be used, reproduced, copied or varied, wholly or in part without written permission from an authorised Burbank representative. Copyright Burbank Australia (NSW) Pty Ltd. ABN 88 610 822 870. NSW BL 295627C. ACT BL 2016566.